



**#
WE
ARE
CRC**

**STUDENT HANDBOOK
FOR ADULT 19+
LEARNERS**

2020-21



**CAMBRIDGE
REGIONAL COLLEGE**
GREAT CAREERS START HERE



MESSAGE FROM THE PRINCIPAL

**Welcome to Cambridge Regional College.
We are delighted you are joining us and we
wish you every success on your programme.**

Thank you for choosing Cambridge Regional College to pursue your learning. Whether you are studying at our Cambridge or Huntingdon Campus, we hope you will have a wonderful time at CRC, developing skills that will help you build a great career and to have an exciting future.

We are very proud to be one of the top further education Colleges in the country for student and employer satisfaction, as well as for the number of students who go on to further study and great careers, CRC students progress on to great jobs, Apprenticeships and Higher Education programmes. Over 90% of students would recommend CRC to their friends thanks to our inspirational teachers and outstanding facilities.

Everyone at Cambridge Regional College is totally committed to your success. It is a great place to learn, with the education, training and work experience you need to help you prepare for a successful, rewarding and enjoyable career. College life is not all about study, of course. Your learning and success are the reason CRC exists and every member of staff is working to enable you to succeed. We hope you enjoy your time at the College.

We know this has been a difficult time for you and we are delighted to be able to welcome you to college and your new studies. Over the summer we have put in place lots of measures to keep you safe, including frequent cleaning, one way systems and temperature checks, as well as requiring anyone who is experiencing any Covid like symptoms to stay away from college until they have received a negative test result. Please help us to maintain our College community as a place where everyone respects each other, follows the rules intended to keep everyone safe and well, and where everyone can be successful.

We look forward to helping you to achieve your learning aspirations and your career dreams.



A handwritten signature in white ink that reads "Mark Robertson". The signature is stylized with a long horizontal line extending from the end.

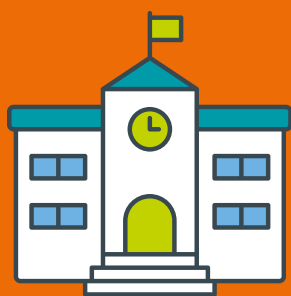
Mark Robertson
Principal and CEO



of students would
recommend CRC.



Transforming
lives and creating
prosperity.



One of the top further
education Colleges in
the country.

#WeAreCRC



YOUR

CAMBRIDGE REGIONAL COLLEGE...

One Great College, Two Great Campuses.....	06
Campus Maps	07
Raising Adult Education in the Community.....	08
Our Mission, Vision and Values.....	09
Keeping the College Safe from Covid19.....	10

STUDENT 101 - THE WHAT, WHERE AND WHEN

Term Dates	14
The Hub, The Hub Online, ID Cards, College Closures, What to do if you are Absent and You Feel Unwell Whilst at College.....	16
Student Behaviour and Conduct	17
Mobile Phones, Vehicle Parking, Food and Drink and Fire and Lockdown Procedures	18

MAKING THE MOST OF YOUR TIME AT COLLEGE

Careers and Personal Guidance	22
Apprenticeship Recruitment and Learning Resources Centre (LRC)	24

GET INVOLVED

Enrichment, Student Ambassador Scheme, TMail, Student Union and Clubs and Societies.....	28
CRC Voice	29

SUPPORT FOR YOU

Welfare and Wellbeing, Learning Support, Bursary Support..	32
Safeguarding and Prevent	34
Equality and Diversity, Fire, First Aid and Health and Safety and Complaints and Compliments, Plagiarism, and Academic Appeals.....	36

CRC BENEFITS

NUS Totum, Sports Centre, IT Access and Hair and Beauty...	40
Follow us on Social Media	41
Useful Contacts and Information and Student Guides	42



ONE GREAT COLLEGE TWO GREAT CAMPUSES



Cambridge Campus

Kings Hedges Road,
Cambridge, CB4 2QT

Tel:

01223 418200

Email:

enquiry@camre.ac.uk



Huntingdon Campus

California Road,
Huntingdon, PE29 1BL

Tel:

01480 379100

Email:

huntingdon@camre.ac.uk

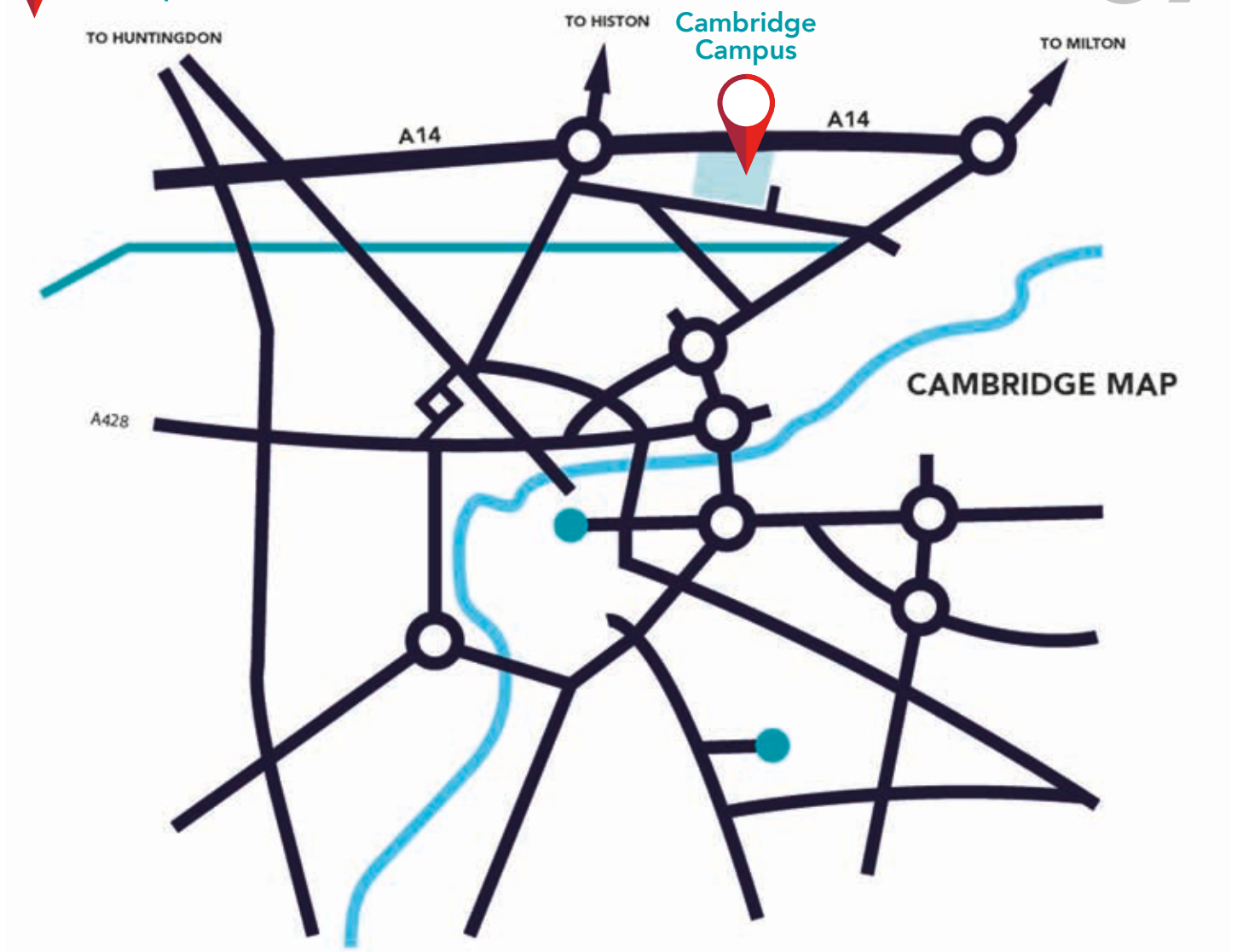
HUNTINGDON CAMPUS

ALL VISITORS, PLEASE REPORT TO MAIN RECEPTION

- P** Visitor & Disabled parking ONLY
- P** Staff ONLY
- P** Staff, Students & Visitors
- i** Location of the Assembly Point

Wayway





DIRECTIONS

Cambridge Campus

Cambridge Regional College is situated to the north of Cambridge City Centre, just off the A14. If you are using a Sat Nav, please use the postcode CB4 2QT

Access from the A14

Exit the A14 at junction 33 signposted for Ely/Cambridge and, at the roundabout, take the exit onto the A1309/Milton Rd signposted for Cambridge City Centre. At the second junction, turn right onto Kings Hedges Road. Turn right at the traffic lights into Kings Hedges Drive. You will find Cambridge Regional College and our Visitor Car Park clearly signposted at the front of the College.

Access from Cambridge City Centre

From the Ring Road/Cambridge City Centre, turn onto Milton Road and travel towards the A14. Turn left onto Kings Hedges Road. Turn right at the traffic lights into Kings Hedges Drive. You will find Cambridge Regional College and our Visitor Car Park clearly signposted at the front of the College.

Public Transport

Taxis are available from outside Cambridge Train Station. The journey time is approximately 15 minutes. A new train station in North Cambridge is about a 25-minute walk away from the College. The Cambridgeshire Guided Busway provides a direct route to the College from Huntingdon and St Ives, Cambridge City Centre, Cambridge Railway Station and Trumpington Park & Ride. There are two Busway stops immediately next to the College: "Cambridge Regional College" and "Orchard Park East".

Huntingdon Campus

From A14 Westbound

- 1) Leave at Junction 23 signposted Midlands/March, staying in right hand lane
- 2) At roundabout take 3rd exit to A141/March
- 3) Pass through 2 roundabouts remaining on A141
- 4) At roundabout take 3rd exit towards St Peters Road
- 5) Pass through 2 roundabouts
- 6) Turn left onto Redwongs Way
- 7) Turn right onto Sallowbush Road
- 8) Follow road through traffic lights onto California Road, College on right

From St Ives

- 1) A1123 Houghton Road
- 2) At roundabout take 2nd exit onto A141
- 3) At roundabout take 1st exit towards St Peters Road
- 4) Pass through 2 roundabouts
- 5) Turn left onto Redwongs Way
- 6) Turn right onto Sallowbush Road
- 7) Follow road through traffic lights onto California Road, College on right

From A141 Chatteris to Warboys

- 1) Take 2nd exit at Warboys roundabout staying on A11
- 2) Pass through two roundabouts
- 3) Take 3rd exit staying on A141
- 4) At roundabout take 1st exit towards St Peters Road
- 5) Pass through 2 roundabouts
- 6) Turn left onto Redwongs Way
- 7) Turn right onto Sallowbush Road
- 8) Follow road through traffic lights onto California Road, College on right

RAISING ADULT EDUCATION IN THE COMMUNITY

As well as two great campuses in Cambridge and Huntingdon, CRC also delivers essential adult education programmes in locations across the region and beyond. We offer many programmes to meet local needs including delivering key skills in maths & English, as well as employability programmes for those looking to take their first step or next step into work.





OUR MISSION

To transform lives and create prosperity by delivering technical and professional education that meets the needs of students, employers and communities in Cambridgeshire.



OUR VISION

To be outstanding in enabling students to excel and for serving employers and communities.



OUR VALUES

The following values, which were developed in consultation with student and staff development groups, underpin the college expectations as we seek to achieve our vision and mission:



Values	For CRC this means...
Welcoming	We are friendly and open to everyone
Empowering	We work to unlock the potential in everyone
Aspirational	We believe that, with hard work and support, everyone can achieve anything
Resilient	We support everyone to overcome hurdles and to turn challenges into opportunities
Excellent	We set high standards, and support and challenge everyone to achieve them
Courageous	We encourage everyone to step outside their comfort zone, to seek better results
Respectful	We recognise that everyone is different and is a valued individual
Collaborative	We work together to share ideas and resources

KEEPING THE COLLEGE SAFE FROM COVID19 RESPECT THE DISTANCE

STUDENT

EXPECTATIONS & GUIDANCE

We understand that for many, there has been a lot of uncertainty concerning education due to the disruption caused by Covid-19. We want to reassure you that we have put in place measures to keep the college community safe. Listed below is key guidance that we expect all learners to follow to benefit the health and well-being of everyone.

This list is an abbreviated version and the full list can be found in Student Regulations.

Students should:

- *Respect the Distance* and follow Government and College Social Distancing Guidelines at all times
- Wear a face mask that covers the mouth and nose and is securely fitted to the face:
 - on entry to the College site
 - when travelling around the College site inside all public areas and corridors, including food and drink outlets
 - when using any form of college transport including buses operated to and from the College
 - when requested to do so
 - anywhere within the College should they choose to do so
- Comply with college checks and assessments to make sure you are well enough to be onsite
- Follow college entry, exit and one-way systems to ensure safe travel around the campus
- Wash your hands regularly
- Follow departmental specific guidance on facility and equipment usage
- Keep to restricted areas of learning as required for your assessment needs
- Report any concerns relating to the safety and welfare of others
- Follow college signage and instruction displays
- Make sure your emergency contact details are up to date
- Dispose of any used face masks, gloves, tissues in the bins provided
- Inform the college immediately of any diagnosis of COVID-19 following testing

Students must not:

- Come into college if they or a member of their family/social bubble display signs of Covid-19
- Put any other college user at risk or illness through any unsafe and deliberate action
- Have physical contact, with other college users
- Leave food items, used drinks bottles or any other litter anywhere other than in the bins provided
- Share personal items, food, drinks with other users within the college

You can wear additional personal protective equipment (PPE) in addition to that which is required by the college, as long as it does not impact your safety when completing practical assessments.

Students will be required to have their temperature checked at college.

A full list of expectations is listed in the Student Regulations. Any breach of the guidelines will be considered as gross misconduct and disciplinary action may be taken.

For further information on what the college is doing to safeguard you please see our website for information and guidance.



#WeAreCRC



THE HUB



24 hour advice and support at your fingertips on computer, mobile or tablet via The Hub Online.



Feeling hungry? As well as The Kitchen & The Park, we have a Costa Coffee (Cambridge) and Starbucks (Huntingdon).

STUDENT 101...

THE WHAT,
WHERE & WHEN



Remember to wear your student ID card at all times. This enables us to identify you as a learner and you'll also need it to access the LRC and food outlets!





“Dates for
your diary!”

TERM DATES

Some of our courses are
not term time only and run
throughout the year

Autumn Term 2020

3 September – 18 December 2020

Autumn Half Term

26-30th October

*Staff Development Day – 23rd October

*Staff Conference – 21 December

Spring Term 2021

4 January – 25 March 2021

Spring Half Term

Feb 15-19 2021

Easter

29 March – 9 April 2021

*Staff Development Day – March 26

Summer Term 2021

12 April – 23 June 2021

Summer Half Term

28 May – 7 June 2021

*Staff Development Day – 24 June



THE HUB

The Hub provides wrap around support to all students and apprentices at CRC and is provided by a group of support teams including:

- Careers & Personal Guidance
- Student Bursary
- Welfare and Support
- Safeguarding
- Apprenticeship Recruitment
- Student Engagement and Students' Union
- Attendance Monitoring
- Transitions Support
- Looked After Children and Care Leaver Support
- PD Coaches -

If you need anything, visit The Hub to be pointed in the right direction.

THE HUB ONLINE

At CRC we pledge to provide outstanding support to students. The Hub Online offers 24 hour information, advice and support at your fingertips on a computer, mobile or tablet. To visit The Hub Online sign into the CRC VLE.

ID CARDS

ID cards are issued to all staff and students and must be worn at all times whilst on College premises, or off-site and in classrooms/training rooms, or on College trips and visits. Your ID entitles you to access the College premises and to access resources such as the LRC and food outlets. If you have a College bus pass you must also show your ID badge when you get on the bus to and from College.

Daily ID badge checks take place at both Campuses. We do this in order to ensure the safety of all students and staff at CRC. Any student who forgets their ID badge must collect a temporary badge from reception or from your

tutor if you are studying in the evening. Students without ID badges will be subject to the Student Regulation procedures.

College is a safe environment but it is important that we all remain vigilant. If you see someone in College without a badge or something suspicious, please report it immediately to a member of staff.

COLLEGE CLOSURES

The College website indicates the current status of the College.

If the college is closed, either partially or the site is closed, there will be an update on the college homepage.

- Amber - The College will have a delayed opening for commercial activities and to local students and all staff who can make the journey safely. The exact time of opening will be communicated on the day by text, social media and College websites. The College is closed for students who would normally attend on the College's contract buses.
- Red - The College is closed to all staff and students.

WHAT TO DO IF... YOU ARE ABSENT

If you are on a study programme and are going to be absent for any reason you must call the college on **01480 379100** for Huntingdon, or **01223 418551** for Cambridge, before 9am to report it.

This number has voicemail for use inside and outside of college hours.

We will need your name, student ID number and the reason for your absence.

If you are studying in the evening, please inform your tutor.

YOU FEEL UNWELL AT COLLEGE

If you start to feel unwell whilst at college please inform a member of staff immediately.

If you need to be excused, please speak to your tutor or subject tutor.



STUDENT BEHAVIOUR AND CONDUCT

All students whether school leavers or adults are asked to observe the College values and follow the College's Student Regulation Procedure which can be found on the VLE.



MOBILE PHONES

Mobile phones must be on silent during any teaching sessions and at all times when in the Learning Resource Centres and all computer rooms.

Students should not record, share or distribute images and videos recorded on any electronic recording device (e.g. mobile phone, MP3 player, tablet) whilst on College premises (including College transport) or College trips, which may cause offence to others or bring the College into disrepute.

VEHICLE PARKING

For Cambridge Campus, parking is charged at £2 per visit and enforced by number plate recognition. Parking outside of these restrictions will result in a fixed penalty notice charge to the address the car is registered at. Please note that enforcement is carried out by an external company. Any concerns about penalty notices should be directed to the issuing company.

There is currently no charge to park at Huntingdon Campus.

FOOD AND DRINK

Both Campuses have a number of food outlets including Costa Coffee, The Kitchen, and the Park Café at Cambridge; and Starbucks in Huntingdon. All providing a mix of hot and cold food, drinks and snacks.

To keep all college users safe, this year students will not be able to sit in and eat or drink in any of the catering outlets. Instead there will be 'grab and go' and/or 'click and collect' options. Students will also be asked to abide by the one-way route systems in place at all the catering outlets.

Cambridge

The Kitchen

Mon – Fri; 8.30am - 2.00pm

Costa

Mon – Fri; 8.00am - 3.00pm

The Park Café

Mon – Fri; 10.00am - 3.00pm



Huntingdon

Starbucks

Mon – Fri; 8.00am - 2.30pm



FIRE AND LOCKDOWN PROCEDURES

As part of CRC's commitment to keeping all students, staff and visitors safe, we do hold regular fire and lockdown practices across both Campuses. It is important that you know what these are and what to do during a drill. To find out the full procedures, please visit the Hub Online and read the Fire, First Aid and Health & Safety Procedures.





MAKING THE MOST OF
**YOUR
TIME**
AT COLLEGE



CAREERS AND PERSONAL GUIDANCE

All adult learners at CRC have unlimited access to our highly specialised and experienced team of Careers Advisers. We tailor our support to learners' individual needs and circumstances, but some of the key services we offer are:

- Personal Guidance: help with identifying your skills, interests, and career aspirations.
- Advice on the means for enhancing your performance in the workplace.
- Support with identifying and developing your employability skills.
- Information about the local and national labour market.
- Support with choosing an appropriate progression route.
- Help with developing an effective job search strategy if needed.
- Advice on CV writing and completing applications.
- Help with preparing for a job, apprenticeship, or university interview.
- Advice on progression to Higher Education including help with identifying courses and completing your UCAS application and personal statement.
- Advice on student finance.

We also work in partnership with Futures for You – a company specialising in providing comprehensive careers support for adults. Our Advisers can be accessed five days per week and we can be flexible with the times of our appointments to work around your study, work or family commitments. To book your face-to-face, telephone, or Microsoft Teams appointment, contact us via phone on 01223 226315 or email at enquiry@camre.ac.uk. You can also ask your Tutor to refer you to our team.



APPRENTICESHIP RECRUITMENT

Did you know if you already have a job and want to undertake an Apprenticeship in the same professional area you can, as long as your employer supports you in undertaking the Apprenticeship with them? Our experienced and extremely knowledgeable Apprenticeship Recruitment Team is based in the The Hub and work closely with the Careers and IAG team to:

- Inform you of everything you need to be aware of if considering undertaking an apprenticeship
- Advise you on how to find and apply for apprenticeship opportunities or set up an Apprenticeship with your employer
- Offer information on over 50 apprenticeship Programmes
- Prepare and assist with interview and employability skills.

(LRC) LEARNING RESOURCES CENTRE

The LRC is a vibrant learning area at the heart of the College. The LRC holds an extensive range of materials and information relating to your studies, as well as a variety of study facilities and spaces.

LRC staff can provide you with support with assignments. There are study areas in the LRC designed for both individual and group study and the LRC staff are more than willing to support you with study and research skills.

Your College ID card allows you to borrow materials and login to the 24/7 learning materials available on the website. LRC staff are on hand to help you make the most of the centre to support your information and study needs.







#WeAreCRC

SU

Students' Union
Cambridge Regional College

When you enrol at CRC you'll automatically become a member of the CRC Students' Union. Run by students, for students, the SU will enhance your time at College!



Become a Student Ambassador and enjoy a range of unique opportunities and experiences! Throughout the year we award selected Ambassadors for their contribution.

GET INVOLVED



Want to start your own club
or society?



ENRICHMENT

College life should be a balance between study and leisure. We strive to give you a range of opportunities to access free enrichment activities to enhance your experience and enable you to contribute to the CRC and wider communities. The College enrichment strategy gives you opportunities to participate in personal, professional and community enrichment. To find out more view the menu of personal development on the Hub online.

STUDENT AMBASSADOR SCHEME

The CRC Student Ambassador Scheme provides students with a wide range of opportunities to share and develop their skills and demonstrate the College values as an Ambassador for the College. Activities include supporting at College open events, attending learner voice meetings, supporting with staff interviews, speaking at local schools, promoting the College to prospective students and writing student blogs for the College website.

Student Ambassador opportunities are advertised in TMail and training is provided when required. This counts as Community Enrichment.

TMAIL

TMail is your way to keep up to date with the latest goings on in the College. It advertises opportunities for you to get involved with CRC life and broaden your horizons and skills to make the most of your time at CRC. If you are studying on an adult study programme your tutors will deliver Tmail each week in Tutorials. If you have anything you would like to add please visit The Hub or contact Hub Online.

STUDENTS' UNION

All students who enrol on a course at CRC automatically become members of the CRC Students' Union. The Students' Union is run by students, for students, and aims to enhance your student experience as well as being a representative body for students. Each year new Students' Union committee members are elected and hold office for one year.

Elections for President and Vice President happen in May each year and the remaining positions are voted in by you during the first half of the Autumn Term.

Positions include:

- President
- Vice President (Cambridge Campus)
- Vice President (Huntingdon Campus)
- 16 – 19 Study Programmes Officer
- Adult Learning Officer
- Apprenticeships Officer
- SEND Officer
- International Officer

To find out more about getting involved please visit The Hub at either campus or visit the Student Voice page on The Hub Online.

CLUBS AND SOCIETIES

There are lots of opportunities to get involved in College life alongside your course. Students at CRC are encouraged to start their own club or society - complete the Club Start Up Form on the VLE. If you are interested in starting a Club or Society or finding out about ones that are already happening, visit the The Hub at either campus or download the information from The Hub Online.



“SHAPE YOUR
EXPERIENCE”

CRC STUDENT VOICE

“CRC Voice” is the umbrella name for a group of students made up of Tutor Group Representatives, Student Leaders, Students’ Union Officer Team and Student Governors. If you decide to put yourself forward for one of these roles, you will have the opportunity to represent your fellow students in order to support the College in providing an outstanding student experience.

You will receive a Welcome to CRC Voice Presentation within your first weeks at College but, if you would like to find out more about getting involved, please visit The Hub at either campus or download an information pack from The Hub Online.





At Cambridge Regional College we treat everyone with respect. We believe that everyone has a right to be valued and have equal opportunities.



We know that money matters. If you need help with bursary support, speak to our dedicated bursary and finance team.



#WeAreCRC

SUPPORT FOR YOU



WELFARE AND WELLBEING

Your physical and mental wellbeing can affect your learning. Should you ever need to talk to someone confidentially about issues that may be creating barriers to success, our Welfare and Support Team, are based in The Hub.

The team can offer support and advice on a number of areas including:

- Safeguarding yourself and others whilst at CRC
- Mental health
- Sexual health
- Drugs and alcohol
- Sexuality and identity
- Healthy relationships
- Being a young carer or young parent.

The team also works with many outside agencies and charities that support the service that is already provided. If we can't support you fully or we identify that you may need some extra support, we will work with you to refer or signpost you to one of our partner services.

safeguarding@camre.ac.uk

LEARNING SUPPORT

The College offers a range of learning support to support independent study. You can access learning support sessions on a 1:1 basis, in small groups and through in-class support. We also provide a range of study workshops and intensive learning support sessions to help you prepare for examinations and assessments. All of our learning support team are specialists in a range of different fields and will help you to achieve your ambitions. We support students to improve their English and maths skills as well as providing useful strategies for dyslexic students. Support is also available for those with a visual or hearing impairment, or for those who need support with physical access. For more information about study support contact your Personal Tutor or the Head of Learning Support.

BURSARY SUPPORT

Money matters shouldn't stop you from achieving your learning goals, which is why our bursary and finance teams are available to advise you on sources of financial help, including any bursaries or support funds that may be available to you.

For adult learners we offer financial support to ensure you can study alongside your other responsibilities and commitments without having to worry about costs.

You can download an application form and find further information at <https://www.camre.ac.uk/adult-learners/financial-support-advanced-learner-loans/> or come to The Hub to discuss matters in person.

If you are not eligible for bursary support, but would like advice and tips on how to manage your money, please visit The Hub.



SAFEGUARDING

Staying Safe in College is called Safeguarding.
In practice Safeguarding means:

- Protecting children, young people and vulnerable adults from abuse and maltreatment
- Preventing harm to their health and development
- Ensuring they grow up in the provision of safe and effective care
- Taking action to ensure all children, young people and vulnerable adults have the best outcomes.

The safety and wellbeing of everyone who works and studies at CRC is our top priority. All College staff are trained in safeguarding and there is also a team of specialist Designated Safeguarding Officers. This means that if you need help, there will always be a member of staff in College who can help - and if they can't, they will know someone who can.

There is also always a Safeguarding Officer in The Hub.

If you are experiencing any type of harm at College or in your personal life, please speak to any member of staff.

safeguarding@camre.ac.uk

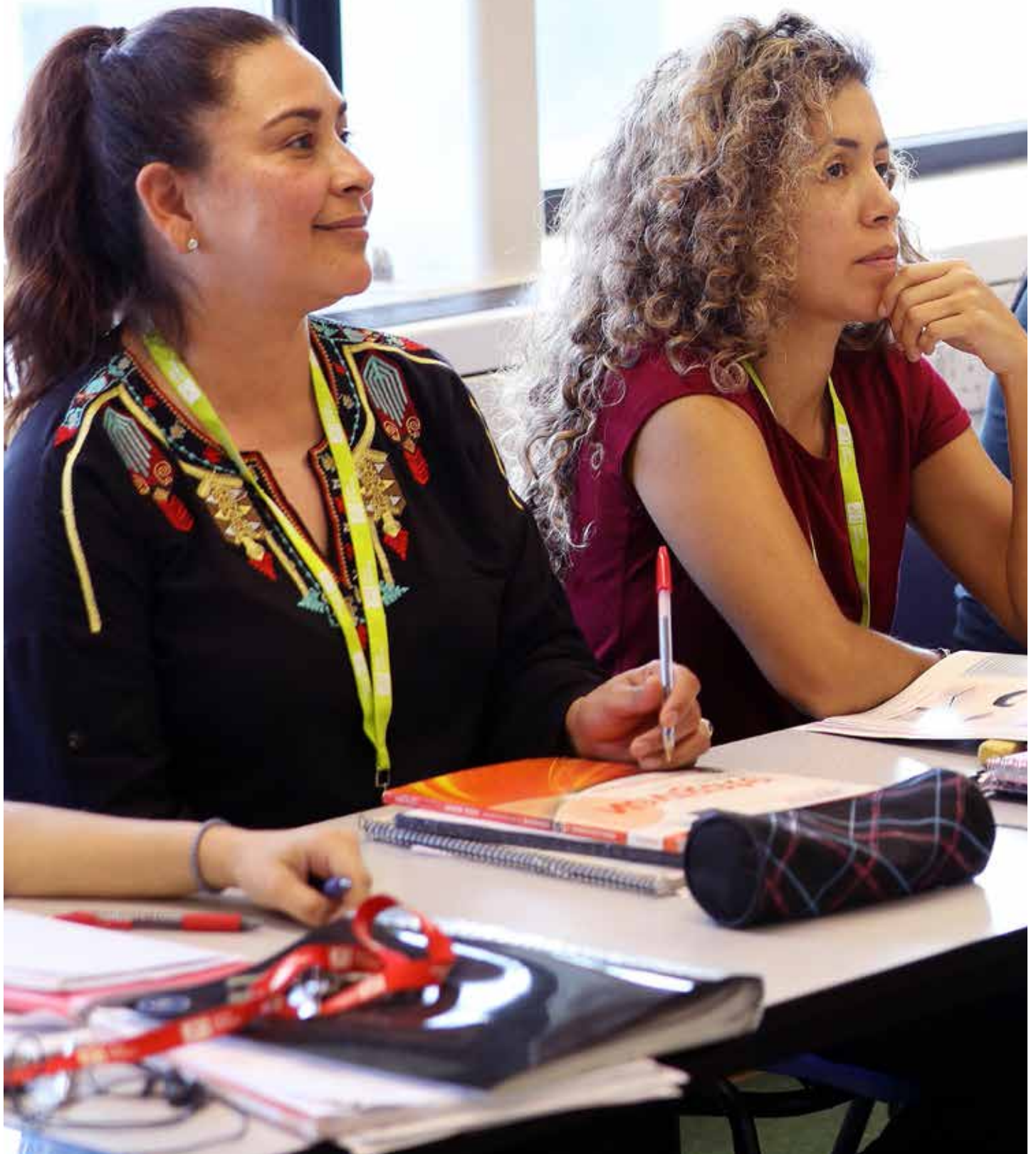
PREVENT & BRITISH VALUES

Another aspect of Safeguarding is the Prevent Duty, a Government strategy that requires schools and Further Education Colleges to have "due regard to the need to prevent people from being drawn into terrorism, supporting terrorism or being drawn into non-violent extremism." Extremism is defined as "vocal or active opposition to fundamental British Values."

Prevent is safeguarding students to keep them both safe and within the law. The Prevent Duty is not about stopping students from having political and religious views and concerns but about supporting them to use those concerns or act on them in non-extremist ways. Prevent aims to provide early intervention to protect and divert people away from being radicalised and being drawn into terrorist activity.

Staff and students are urged to be vigilant and to report any concerns to any member of staff.

“SAFE AND
SUPPORTIVE”



EQUALITY AND DIVERSITY

At Cambridge Regional College we treat everyone with respect. We believe that all have a right to be valued and to have equality of opportunity regardless of gender, gender identity, disability, support needs, ethnicity, religion and belief, age, sexual orientation or social class.

We expect all staff and students to play an active role in promoting equality and challenging discriminatory behaviour. We expect anyone who feels unfairly treated, who is upset by inappropriate comments or jokes, feels they are victims of abuse or who experience any form of discrimination or harassment, to tell us. We take any form of discrimination or harassment very seriously.

FIRE, FIRST AID AND HEALTH & SAFETY

All students are required to take reasonable care of their own health and safety while on College premises and observe information about health and safety in College. To read all Fire, Health and Safety procedures please visit The Hub Online.

COMPLAINTS AND COMPLIMENTS

The College welcomes any feedback and suggestions. We actively encourage this type of feedback from our students, staff and the wider community of the College.

If you have a positive experience during your time at College and would like to tell us, or you wish to let us know how we can improve our service to you, please tell us.

If you are unhappy about any part of your College experience, we want to hear about it. If you tell us about any concerns or problems that you have, it gives us the opportunity to try to improve things for

you, and for others who might have the same issues.

The College has a compliments and complaints procedure which is available for you to read on the college website:

<https://www.camre.ac.uk/about/policies-reports/>

Feedback forms are also available at Reception.

If you wish to make a complaint, please contact complaints@camre.ac.uk.

PLAGIARISM

Plagiarism is using other people's words and work and passing them off as your own. Plagiarising someone else's work is not acceptable in the educational and academic world. Any piece of work which deliberately plagiarises will be failed, and could lead to a student being unable to successfully complete their course. It is possible to plagiarise unintentionally, however using referencing can avoid plagiarism. When making notes, make sure that you reference your work properly. Staff in the Learning Resource Centre, or your tutor, can offer you advice on how to reference correctly.

ACADEMIC APPEALS

If you are concerned about the grade you have been awarded for an assessment, then talk to your tutor, or a manager in your area in the first instance. If you are still not satisfied you can email your concerns to the the Head of Quality Improvement at QT@camre.ac.uk. Please make sure you give as many details as possible, with evidence. The full appeals policy is available on our website.

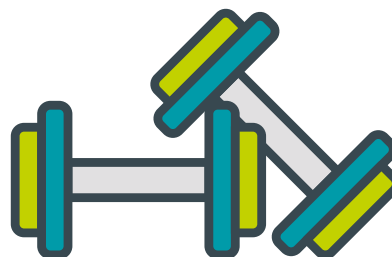




#WeAreCRC



Save money with a Totum card!
Totum is the number 1 student
discount card, bringing you over
200 UK student discounts.



Want to train in an environment with top of
the range equipment and personal trainers on
hand? We have gyms on site!

CRC BENEFITS



TOTUM CARD

When you join CRC you automatically become a member of the National Union of Students (NUS) and are eligible to download the FREE Totum App and purchase a Totum Card.

NUS Totum is the number 1 student discount app and card, bringing you over 200 student discounts.

Download the app now to access information on what is happening at CRC including events, workshops, clubs, activities and opportunities to enhance your student experience and personal development.

<https://www.totum.com>

SPORTS CENTRE

We have gyms on both sites for students to use.

Cambridge Campus: students can access the gym in the sports centre for £20 for the year. If you want to train in an environment with top of the range equipment and personal trainers on hand then why not join our Gym at The Park. Monthly memberships start from £20.00 if you have an NUS card.

Huntingdon Campus: students can access the gym for free at Huntingdon Campus once they have done a gym induction. All bookings for inductions and workouts are now online.

For both campus gyms, you must undertake an initial induction which can be arranged directly.

IT ACCESS

As an enrolled student at Cambridge Regional College you will receive a free personal network, Office 365 and wireless account once you have enrolled.

If you have your own a laptop, mobile phone or tablet then you have free access to our WiFi network.

Your login details once enrolled will be:

Username: Student ID

Password: CRCyourpostcode

Your Office 365 account can be accessed via any web browser from <https://login.microsoftonline.com/>

Username: studentid@students.camre.ac.uk

Password: CRCyourpostcode

You also have access to a free copy of Microsoft Office 365 which you can install on up to five personal devices

HAIR & BEAUTY

Elements - our fully-equipped salon at Cambridge Campus and Vitality at Huntingdon Campus are open to the public.

We have professional and training hair & beauty salons and a spa and we are renowned for delivering a high quality service at a fantastic price.

The salons operate as both a training and professional salon offering training, trained and qualified treatments at amazing prices. CRC students have the opportunity to work alongside our professionals gaining valuable commercial work experience whilst developing their industry skills.

To book an appointment just pop in to see us or you can book online

www.thepark-cambridge.co.uk or visit

www.vitalitysalon.net



“FIND US ON
SOCIAL MEDIA”

FOLLOW @CRC

We encourage all students to follow us on social media so you can keep up to date with the latest news and events happening around your college. Connect with friends, follow the CRC social media channels:



@CRC_College
@CRCHuntsCampus



CRC_College



Cambridge Regional College
Cambridge Regional College Huntingdon Campus



Cambridge Regional College

USEFUL CONTACTS AND INFORMATION

	Cambridge	Huntingdon
The Hub		
Helpdesk	via the Student Wall or https://helpdesk.camre.ac.uk	
Bursary	01223 418443	01223 418443
Welfare	01223 418250	01480 379119
Safeguarding	01223 418442	01480 379151
Careers & IAG	01223 226315	01480 379117
Enrichment and Sport	01223 226336	01480 379117
Student Union	01223 226336	01480 379117
Student Ambassadors	01223 226336	01480 379117
Administration		
Admissions	01223 418448	01223 418448
Exams Office	01223 418331	01223 418331
Reception	01223 418200	01480 379100
Student Administration	01223 226347	01223 428888
Transport	01223 418244	01223 418244
Evening Duty Manager	01223 418200	01480 379100
The Park & Leisure		
Hair and Beauty Studios	01223 418998	01223 418998
Seasons at The Park Restaurant and Café	01223 418998	01223 418998
Sports Centre	01223 418280	01223 418280
Vitality Salon		01480 379379

Also see www.camre.ac.uk/contact/ for useful contact telephone numbers and email addresses

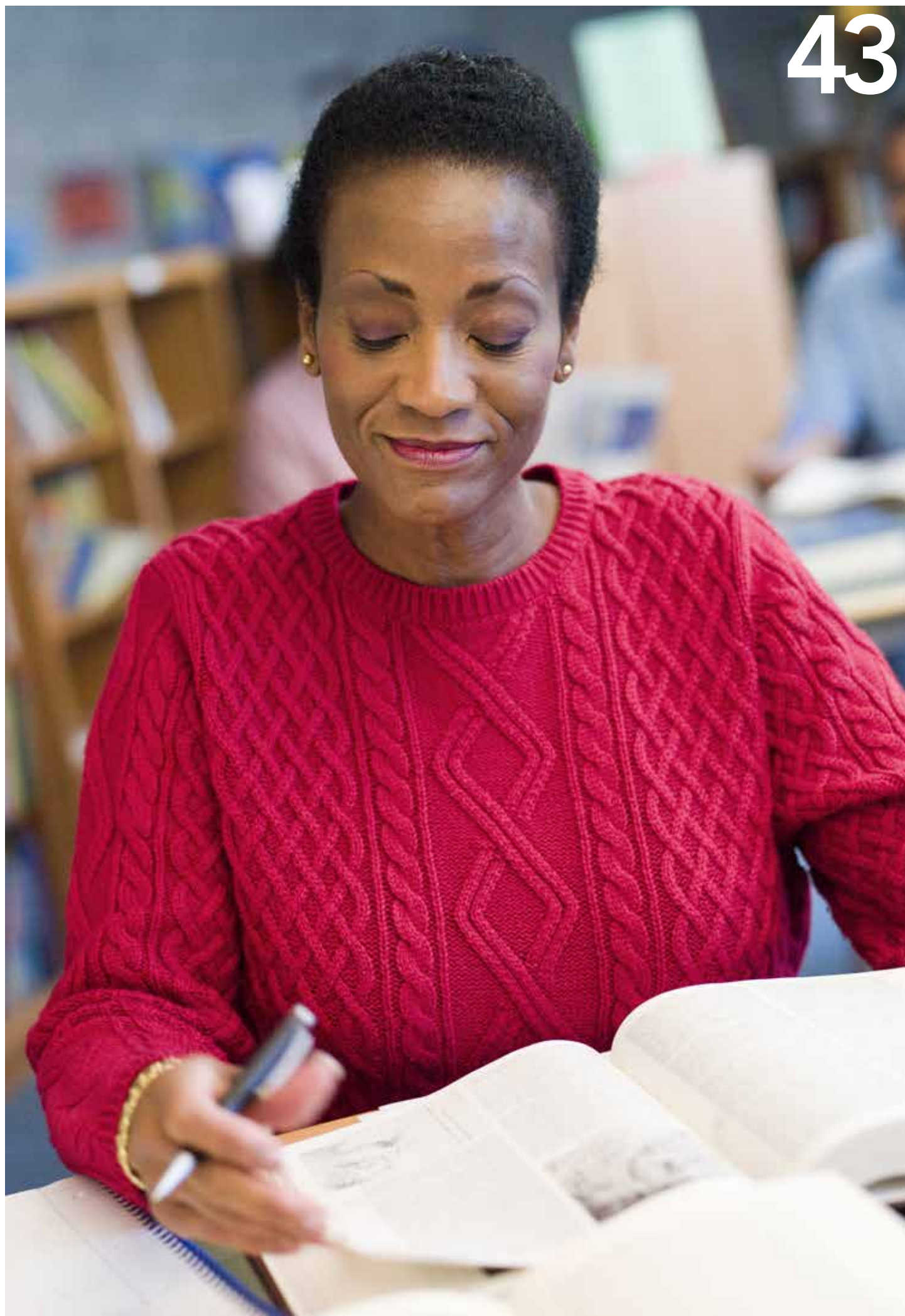
STUDENT GUIDES

For student guides and processes, please visit:

<https://www.camrevle.com/course/view.php?id=134§ion=1>

Plagiarism Policy

https://www.camrevle.com/pluginfile.php/545027/mod_resource/content/1/Plagiarism%20Statement.pdf



Cambridge Campus

Kings Hedges Road,
Cambridge, CB4 2QT

Tel: 01223 418200

Email: cambridge@camre.ac.uk

Huntingdon Campus

California Road,
Huntingdon, PE29 1BL

Tel: 01480 379100

Email: huntingdon@camre.ac.uk

www.camre.ac.uk

#WeAreCRC



**CAMBRIDGE
REGIONAL COLLEGE**
GREAT CAREERS START HERE